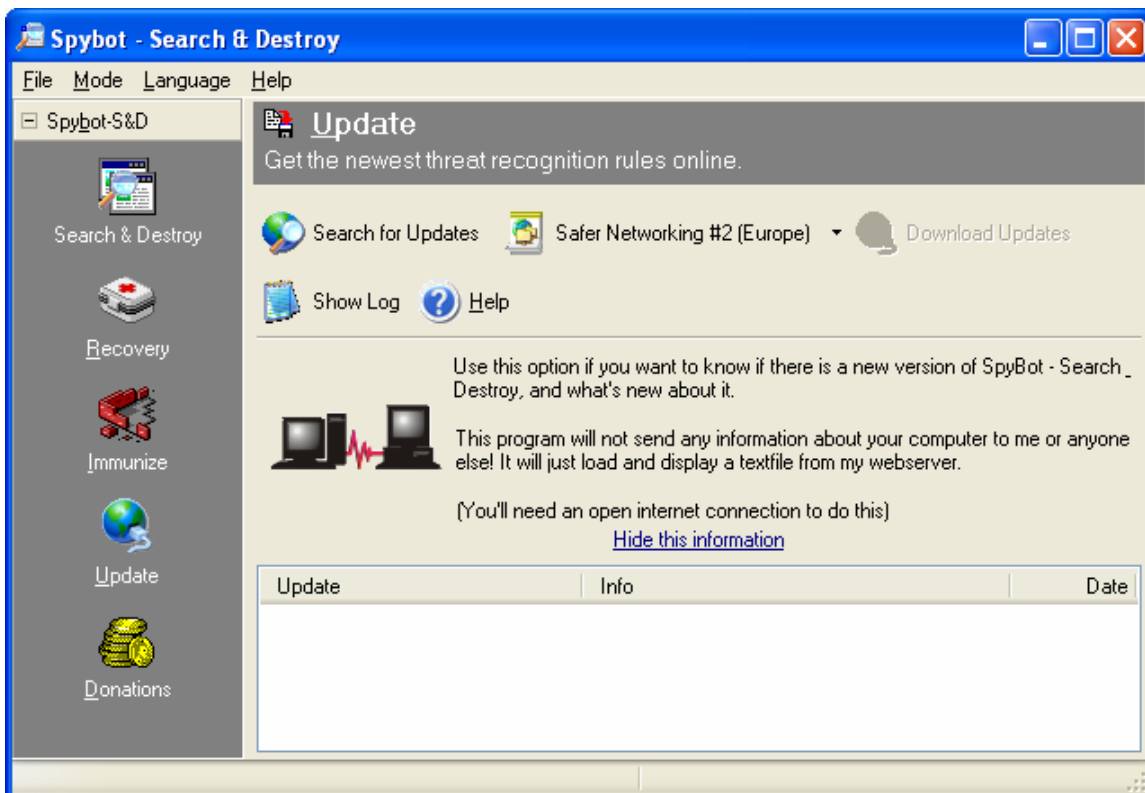
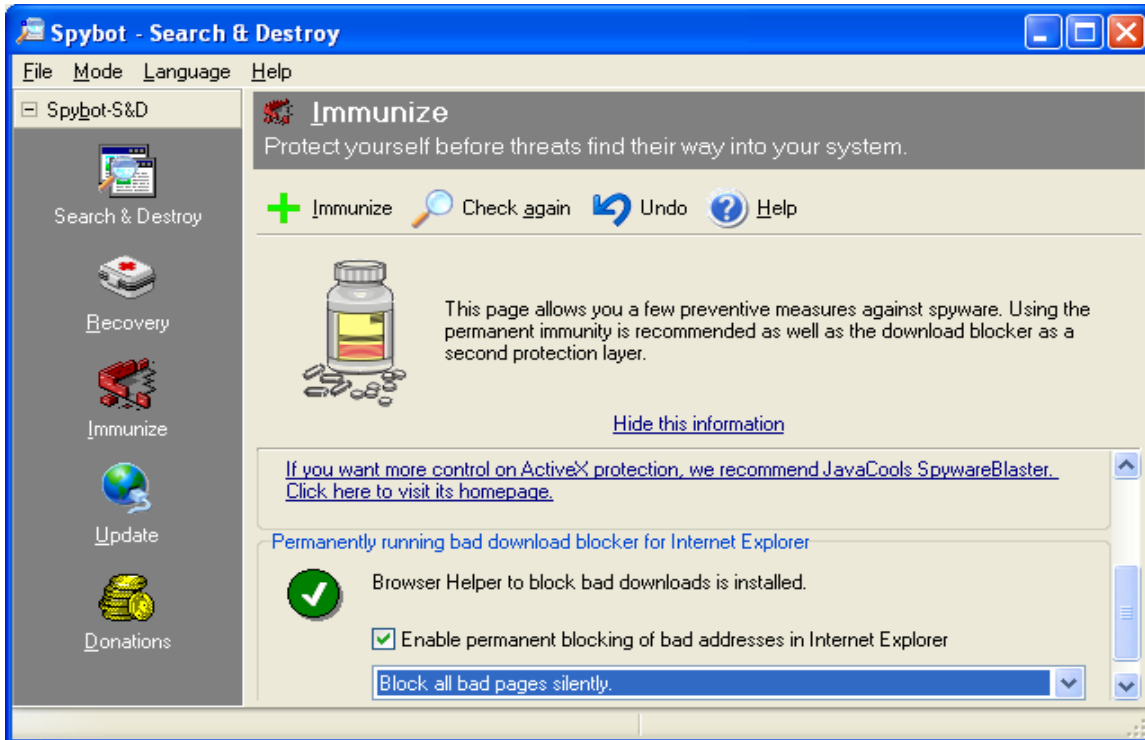


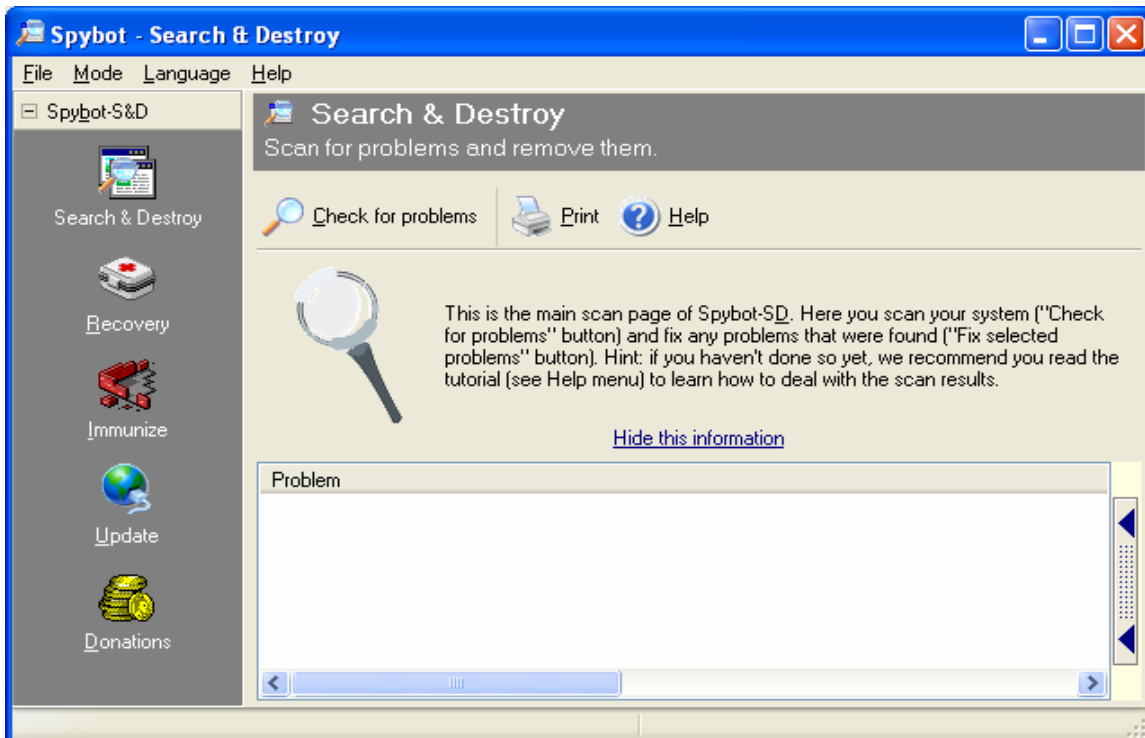


Once you have started Spybot-Search&Destroy, you should update the program.





After you have started the program, you will already see the scan screen. If not, please select *Search & Destroy* in the *Spybot-S&D* section in the toolbar to the left.



The search screen contains a toolbar with the most important options. Let's start a scan: please press the *Check for problems* button.

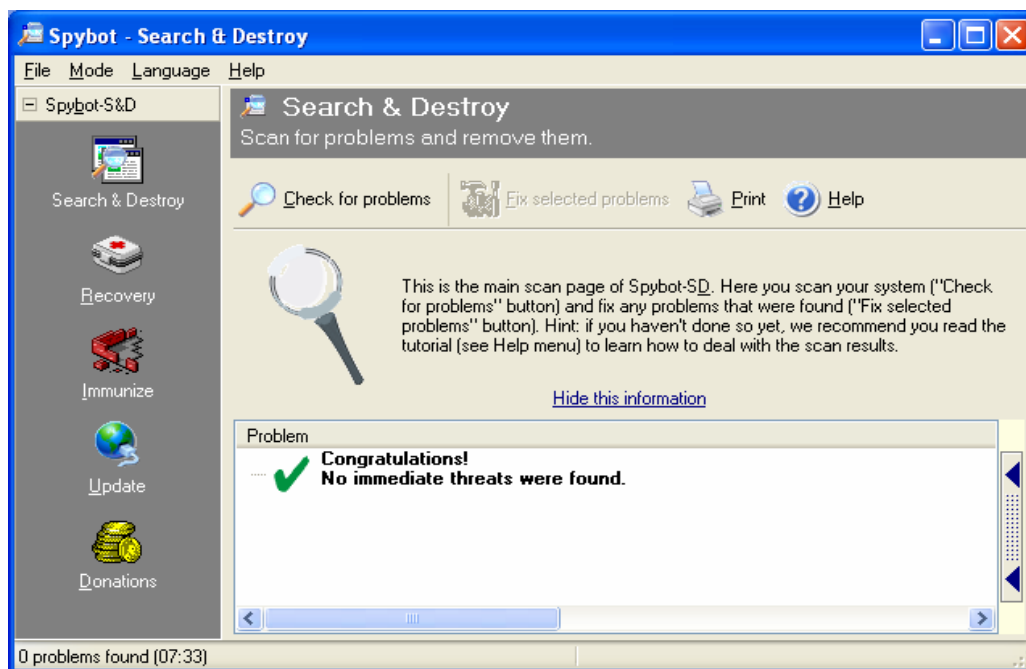
You will see the scan progress in the status bar at the bottom of the window (the right-most section displayed the estimated time left), and can stop the progress at any point by pressing the *Stop check* button that has just appeared (it will vanish again once the check has finished).

If the scan has found something, the list will show it. There are two basic kinds of results:

- **Red entries** indicate [spyware](#) problems that should be fixed to avoid security and/or privacy problems. This is the only kind of problem that is preselected to be fixed.
- **Green entries** indicate [usage tracks](#). It can do no harm to remove these.

For most of the problems there are more informations available. On the right side of the window you will find a grey button. By clicking it a window will open and show you some information about the item selected (if there is none selected, you can simply click on it and the information will be displayed).

You can now select the problems you want to fix, by clicking the checkbox before it, or by selecting all using the button *Select all problems* (this button will only be able in advanced mode by enabling the expert button setting). More selection options are available if you look into the context menu (by right-clicking a problem). The context menu will also allow you to exclude single problems or whole products from further scans (you may later change the exclude settings in the [settings](#) section/Ignore...).



Once you are sure you have selected what you want to be removed from your computer, press the *Fix selected problems* button. You will see the fixing progress at the bottom status bar.

If problems can not be fixed now (because they are still loaded and can't be terminated, for example), Spybot-S&D offers to run on next system start, so you can check and fix again.

Should you notice at any later point that you have removed more spyware than you wanted, you can always restore it from the [recovery](#) in the Spybot-S&D-section.

You can also fine-tune your scan options by selecting special [filesets](#) and changing some [settings](#).